



669 State Route 93, Sugarloaf, Pa. 18249
570-788-1176

3 DAY MEAT SALE

OCT 17th (Thurs), OCT 18th (FRI), OCT 19th (SAT)

Whole or Half Boneless
NEW YORK STRIP

\$5⁸⁸_{lb}

Cut FREE into Steaks

Whole or Half Boneless (Delmonico)

RIB EYE

\$7⁸⁸_{lb}

Cut FREE into Steaks



Whole Boneless
PORK LOIN

\$1⁹⁸_{lb}

Cut Free into Chops

Boneless / Skinless
CHICKEN BREAST

\$1⁹⁸_{lb}

Sold in 10# Bag

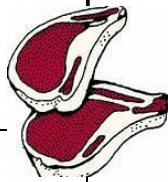


Regular Only
HATFIELD BACON

\$2⁹⁸_{1lb Pkg}

Hot or Sweet
PRIMA-PORTA SAUSAGE

\$2¹⁸_{lb (10# Box) Only}



Hatfield
HAM STEAKS

4 for \$5

8oz Pkg

Frozen 26/30 EZ Peel
RAW SHRIMP

\$4⁸⁸

1lb Bag



Sahlen's
HAM off the BONE

\$4⁹⁸_{lb}

Customer Favorite

Bongards White
AMERICAN CHEESE

\$3⁹⁸_{lb}

Sliced Fresh in Deli

While Supplies Last * Quantity Rights Reserved * Not Responsible for
Typographical Errors * Beef Weighed Before Cutting * Bulk Packs Only



669 State Route 93, Sugarloaf, Pa. 18249
570-788-1176

3 DAY MEAT SALE

OCT 17th (Thurs), OCT 18th (FRI), OCT 19th (SAT)

Whole or Half Boneless
NEW YORK STRIP

\$5⁸⁸_{lb}

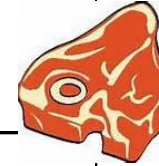
Cut FREE into Steaks

Whole or Half Boneless (Delmonico)

RIB EYE

\$7⁸⁸_{lb}

Cut FREE into Steaks



Whole Boneless
PORK LOIN

\$1⁹⁸_{lb}

Cut Free into Chops

Boneless / Skinless
CHICKEN BREAST

\$1⁹⁸_{lb}

Sold in 10# Bag

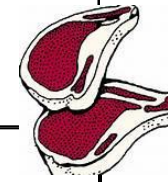


Regular Only
HATFIELD BACON

\$2⁹⁸_{1lb Pkg}

Hot or Sweet
PRIMA-PORTA SAUSAGE

\$2¹⁸_{lb (10# Box) Only}



Hatfield
HAM STEAKS

4 for \$5

8oz Pkg

Frozen 26/30 EZ Peel
RAW SHRIMP

\$4⁸⁸

1lb Bag



Sahlen's
HAM off the BONE

\$4⁹⁸_{lb}

Customer Favorite

Bongards White
AMERICAN CHEESE

\$3⁹⁸_{lb}

Sliced Fresh in Deli

While Supplies Last * Quantity Rights Reserved * Not Responsible for
Typographical Errors * Beef Weighed Before Cutting * Bulk Packs Only